

Lost World of Mount Roraima

Trekking Adventure

Mount Roraima is known as South America's 'lost world'. A gigantic tableland encircled on all sides by soaring vertical cliffs, it towers over the surrounding savannahs and rainforest like an immense fortress.

Mount Roraima's summit has been isolated for millions of years and is home to bizarre landscapes of towering stone pinnacles, a valley of shimmering quartz crystals, and unique animals and plants found anywhere on earth. The exploration of Mount Roraima inspired Arthur Conan Doyle's novel *The Lost World*.

Trekking up Mount Roraima is one of **South America's greatest experiences!** This trip offers you the opportunity to see Mount Roraima up close and personal, as the plateaus' gigantic cliffs rise on the horizon, and tower above you as you trek closer. We ascend via a ledge that runs up the cliffsides, which is actually relatively easy to traverse (no technical skills are needed, but a good level of fitness and high stamina are required). As this secret staircase takes us through the clouds, we watch the vegetation change from lowland savannah to misty, lush cloudforest, until finally we reach the summit of the lost world.

COST: £3,450 (British Pounds). Personal porters can be hired at extra costs (contact us for details).

START POINT: Boa Vista, Brazil

END POINT: Boa Vista, Brazil

GROUP SIZE: 6–10 (on double/twin room basis - single room supplement available).

DATES: Redfern Adventures will run four trips this year: **Trip 1** in April, **Trip 2** in June/July/August, **Trip 3** in September/October and **Trip 4** in November/December. Please email us for the exact dates. We will finalise the group of participants, then finalise the exact dates for each trip to best fit everyone's schedules.

BESPOKE TOUR: If you do not wish to join a group tour, we can customise a private trip to suit your dates and interests. Please email us for details.

Email sales@redfernadventures.com for more information and to make bookings.

Getting there: Although this expedition takes place in Venezuela, we will start and end this trip in Boa Vista, Brazil (which is easier and safer Caracas). Participants can fly to Manaus (which is a major hub for international flights) and catch domestic flights to Boa Vista, e.g. Azul (www.voegazul.com.br) and search LATAM.

Participants have the advantage that they can spend a day or two before the expedition exploring Manaus' fascinating colonial heritage in the heart of the Amazon. There are also countless locally operated tourist trips to explore the Amazon River and the Rio Negro, including trips to see pink river dolphins, wildlife excursions and visits to indigenous communities nearby.





ITINERARY

Please see a promo video for this expedition: <https://youtu.be/ljhxltOeFes>

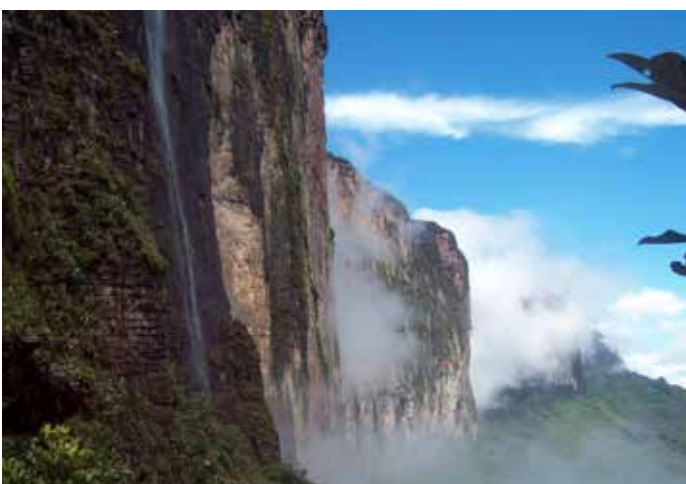
Day 1: Meet in Boa Vista at 7.00 am. Transfer in private charter vehicles to the Venezuelan border (approx 4 hours driving time). We cross the border, and arrive in Santa Elena, Venezuela. Lunch and snacks en-route. Dinner in restaurant in Santa Elena. Overnight in local hotel. Arrive in Boa Vista the night before.

Day 2: After breakfast, transfer in 4*4 vehicles to Paratepui for registration with the Canaima National Park authorities. Begin trek to Mount Roraima, with the goal of reaching Rio Tek camp site (approximately 6 hours walking over relatively flat terrain). Lunch en-route. Camp-side dinner and overnight in tents. The views of Mount Roraima are spectacular!

Day 3: Today we trek from Rio Tek campsite to Base Camp (located beneath the dramatic, gigantic cliffs of Mount Roraima). The trek is uphill, and takes approximately 6–8 hours. Lunch en-route. Camp-side dinner and overnight in tents.

Day 4: We trek through misty, lush cloudforest, to the base of the ledge of Mount Roraima. Ascending the ledge, we climb through layers of mossy vegetation, through *Bonnetia* forest and groves of giant bromeliads and treeferns. The views across the surrounding lowlands are spectacular. Below the ledge, we see flowering *Utricularia* and *Genlisea* (including usually *U. humboldtii*). The climb up the ledge takes 4–5 hours. We then reach the summit of Mount Roraima, and step into a bleak, barren landscape of blackened stone, twisted rock formations and bizarre plants. We reach a “hotel” (campsite in a cave or under a rock overhang). Camp-side dinner and overnight in tents inside caves. The trek today is steep and uphill pretty-much the whole way. No technical skills needed - but it is steep. A good level of fitness and high stamina is needed.

Day 5, 6, 7 and 8: We explore the summit of Mount Roraima. Note: we can decide the itinerary of our time on the summit as a group, depending upon everyone’s interests, the weather, and how much trekking we (as a group) would like to undertake. Recommended highlights include the Valley of the Crystals, the labyrinth of towering stone pinnacles, Lake Gladys, the Prow, Triple Point (the three way border of Venezuela, Guyana



ITINERARY

and Brazil) and the Oilbird Ravine (home to rare echo-locating oilbird *Steatornis caripensis*). The summit is the habitat for a plethora of orchids, bromeliads, airplants, carnivorous plants (*Brocchinia*, *Drosera*, *Genlisea*, *Heliamphora* (we will see *H. nutans*, *H. glabra* and a hybrid between the two species) and *Utricularia*), unique butterflies and toads, and a black and yellow spotted lizard called *Riolama*. A trek to La Ventana offers the chance to catch breathtaking views of some of the most spectacular scenery in South America. Other activities include sunrise walks to the western cliff tops to see spectacular sunrise views of the neighbouring plateau Kukenán Tepui bathed in sunlight. The exploration of El Carro view point to see the whole plateau. We can also visit the Jacuzzis (crystal lined pools), the Pit, the Valley of a Thousand Columns and spectacular rock formations. During our stay, we look out for the elusive South American coati (*Nasua nasua*). Campside dinner and overnight in tents inside caves.

Day 9: After breakfast, we descend down the ledge of Mount Roraima, and trek to Rio Tek. Trekking downhill is faster, and most people reach Rio Tek camp within 6–8 hours. Lunch en-route. Campside dinner and overnight in tents inside caves.

Day 10: Today we trek from Rio Tek camp back to Paratepui (approx 4–5 hours walking) to meet 4*4 vehicles that transport us back to Santa Elena for lunch. Dinner in restaurant in Santa Elena. Overnight in local hotel.

Day 11: We have private charter vehicles to explore the Gran Sabana. Highlights include, the jasper creek (made up of red semi-precious gemstone (note the intensity of red depends upon the light levels. On sunny days, the semi-opaque jasper is really red, on overcast days it is more brownish but beautiful). We can also visit several waterfalls, as well as Pemón villages and a population of lowland pitcher plants (*Heliamphora heterodoxa*). On clear days, the view of the Eastern Tepuis is spectacular. Dinner in restaurant in Santa Elena. Overnight in local hotel.

Day 12: Transfer in charter vehicles to the Venezuelan border with Brazil, and onwards to Boa Vista, Brazil.

Note: The pricing of this trip includes funds to enable Redfern Adventures to (1) pay Amerindian Pemón guides a fair wage, (2) make a significant donation to Paratepui Pemón village (3) and hire a rubbish collector to collect litter during this trip, so that we leave Mount Roraima in a better state than when we arrive.

INCLUDED:

- All entrance tickets and permits to visit national parks, including all local guide fees.
- All accommodation and food.
- All ground transportation.
- Professional tour leader.

NOT INCLUDED:

- Tips (optional).

TO ENTER VENEZUELA, YOU MUST HAVE:

- Travel Insurance (bring documents).
- Covid-19 vaccinations (bring certificate).
- Yellow fever vaccination (bring certificate).





ADD ON TRIP

We offer two add-on trips:

1. Photographic charter flight over the Eastern Tepuis and/or Angel Falls

We can charter a cessna and fly over Mount Roraima, the Eastern Tepuis and Angel Falls, affording amazing photographic opportunities. The price depends upon the number of people that want to undertake this trip (and share the charter flight costs).

2. Canoe trip to Angel Falls

We can organise the following itinerary to visit Angel Falls, the tallest waterfall on Earth (highly recommended). The price depends upon the number of people that wish to undertake this trip.

At 979 m in height (nearly a vertical kilometre high), the immense cascade of Angel Falls is twice the height of the Empire State building and fifteen times the height of Niagara Falls - it is one of the great natural spectacles of our world.

Standing at the base of Angel Falls and looking up at the tallest cascade on Earth is one of the world's great experiences! This trip offers an adventurous and fun (but safe and enjoyable) canoe trip as follows:

Day 12: On Day 12 of the main Mount Roraima Expedition, we say goodbye to those not undertaking this add on trip (they travel south to Boa Vista). Meanwhile, we transfer to Santa Elena airport for an incoming private charter cessna, which flies us to Canaima village (the start point for our trip to Angel Falls). **Note:** we can pay the pilot extra to detour over the Eastern Tepuis and/or Angel Falls (can discuss as a group).

On landing in Canaima, we transfer to motorised, traditional Pemón dugout canoes (curiaras) and travel upstream to Angel Falls camp (4 hrs in the canoes). Angel Falls camp is on the bank of the river opposite the mighty Angel Falls. We watch the sun set on the tallest waterfall on the planet. Dinner at Angel Falls camp. Overnight in hammocks.

Day 13: Breakfast in Angel Falls camp, and then cross the river in the canoes and then hike through the rainforest for 1 km to the base of Angel Falls to photograph the gigantic cascade and to bathe in the cascading waters of the falls. We have lunch at a scenic look out point, and then return to Angel Falls camp. Dinner at Angel Falls camp. Overnight in hammocks.

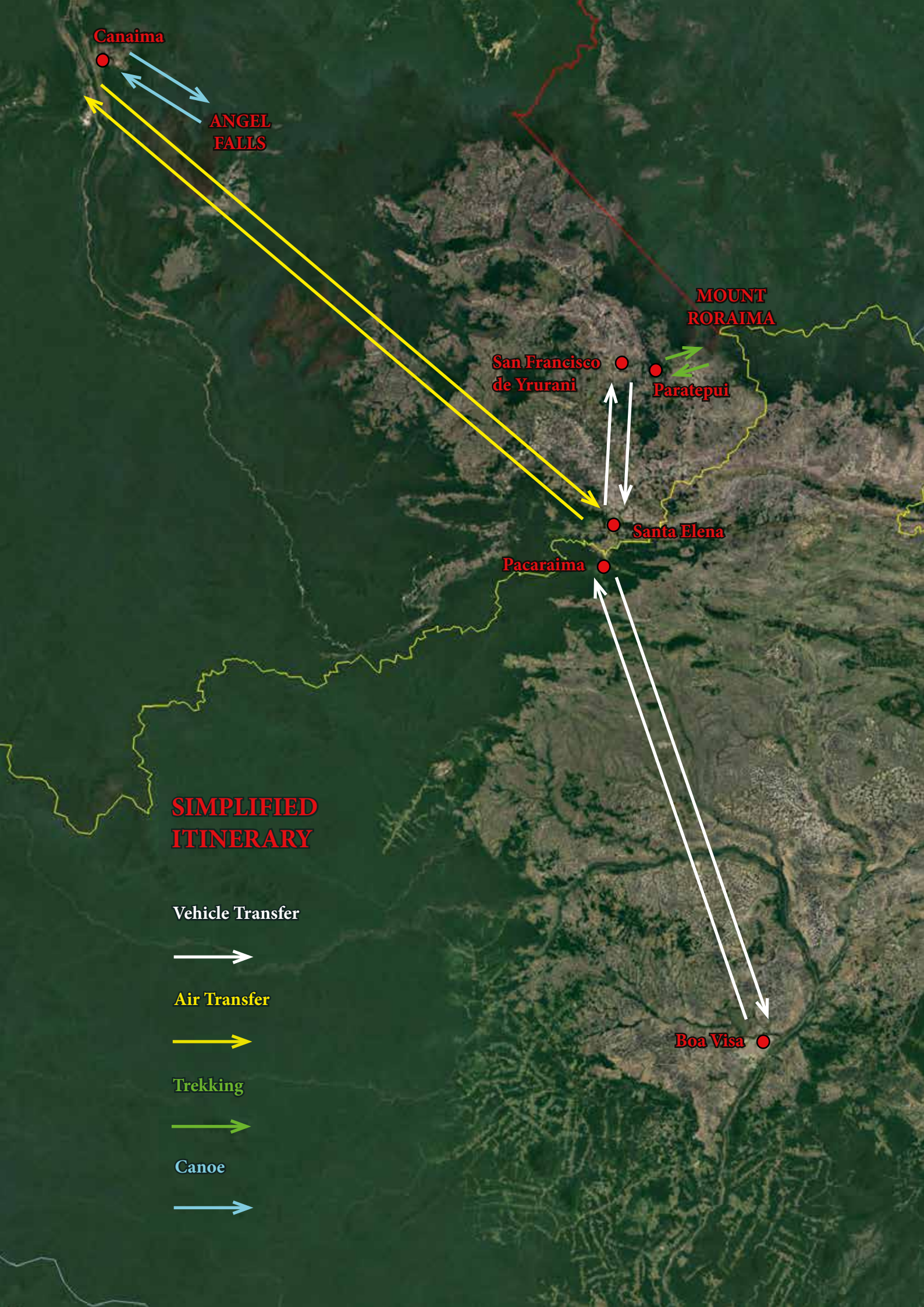
Day 14: After breakfast, we return by motorised canoes back to Canaima. After lunch in Canaima, we explore Canaima lagoon with a walk to Sapo Falls and, depending on water levels, either a walk behind the thundering curtain of water of Sapo Falls or Hacha Falls. Dinner and overnight in a posada (local hotel) in Canaima.

Day 15: Breakfast, then transfer by private charter Cessna to Santa Elena (second opportunity to fly over Angel Falls and/or Eastern Tepuis). Dinner in restaurant in Santa Elena. Overnight in local hotel.

Day 16: Transfer in charter vehicles to the Venezuelan border with Brazil, and onwards to Boa Vista, Brazil.







Canaima

ANGEL FALLS

MOUNT RORAIMA

San Francisco de Yrurani

Paratepui

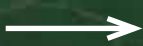
Santa Elena

Pacaraima

Boa Vista

SIMPLIFIED ITINERARY

Vehicle Transfer



Air Transfer



Trekking



Canoe

